

881 CHANNING CIRCLE, BENICIA



SPECTACULAR TRI-LEVEL SOUTHAMPTON HOME!

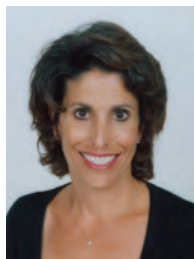
Desirable Southampton Tri-Level home. This home gives you so many living options. Kitchen features 5 burner gas stove, stainless appliances, ample storage and counter space. Up a few steps are 3 bedrooms, down stairs is a bedroom and full bathroom perfect for in-laws/guests/ and home office. On cool days cuddle up by the gas fireplace in the family room. The AMAZING back yard is an extension of your living area. Covered patio can be enjoyed year round. Fruit trees, gardens, multiple patios, chicken coop, large storage shed, gate to open space and a hot tub. This home also offers behind the gate RV/Boat parking. Close to parks and trails for hiking and biking.



**4 Bedrooms • 3 Bathrooms • 2,437 SqFt •
Lot 11,326 SqFt • Built 1984 • MLS# 323026436**

*For more photos and info:
881ChanningCircle.com*

\$975,000



Jennifer Moore

707-319-1933

jmoore@coldwellbanker.com

DRE# 01329293



**COLDWELL BANKER
SOLANO PACIFIC**



JENNIFERMOORETEAM.COM

THIS INFORMATION IS DEEMED RELIABLE BUT IS NOT VERIFIED. EACH OFFICE IS INDEPENDENTLY OWNED AND OPERATED.

881 CHANNING CIRCLE, BENICIA



THIS INFORMATION IS DEEMED RELIABLE BUT IS NOT VERIFIED. EACH OFFICE IS INDEPENDENTLY OWNED AND OPERATED.